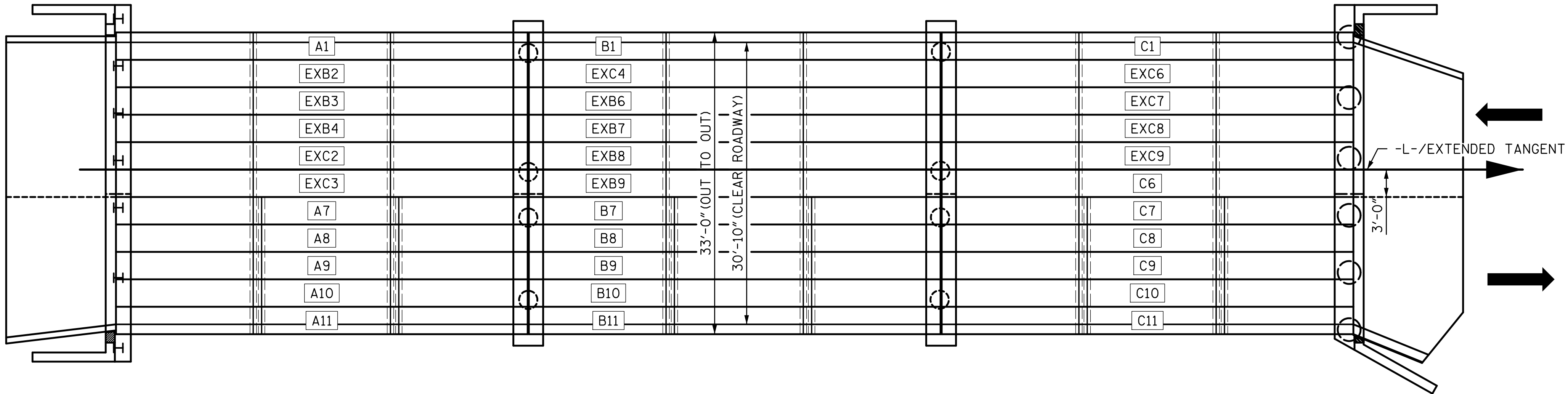


SPAN A

SPAN B

SPAN C

STAGE 5 (CONSTRUCTION)  
PARTIAL CONSTRUCTION OF SPANS A, B, AND C - LEFT OF -L-



SPAN A

SPAN B

SPAN C

FINAL CONDITION

NOTES:

EXISTING CORED SLAB UNITS EXB2, EXB3, EXB4, EXB6, EXB7, EXB8, EXB9, EXC2, EXC3, EXC4, EXC6, EXC7, EXC8 AND EXC9 THAT WERE REMOVED DURING PREVIOUS STAGES, MAY BE REUSED AND ERECTED IN STAGE 5 CONSTRUCTION AS LONG AS THE CORED SLAB UNIT HASN'T BEEN DAMAGED AND IS APPROVED FOR REUSE BY THE ENGINEER IN ACCORDANCE WITH THE SPECIAL PROVISIONS. PLACEMENT OF CORED SLAB UNITS SHOWN IN STAGE 5 ARE A REPRESENTATION OF WHERE THE CORED SLAB UNITS CAN BE PLACED AND THEY MAY BE PLACED IN DIFFERENT POSITIONS IF DESIRED.

CORED SLAB UNITS SHALL BE ERECTED FROM THE INSIDE OF THE BRIDGE OUT TOWARDS THE EDGE OF THE BRIDGE.

FOR ADDITIONAL STAGE 5 CONSTRUCTION INFORMATION, SEE SHEET 8 OF 8.

PROJECT NO. DF18314.2045332

HENDERSON COUNTY

STATION: 13+70.81 -L-

SHEET 3 OF 8



STATE OF NORTH CAROLINA  
DEPARTMENT OF TRANSPORTATION  
RALEIGH

CONSTRUCTION  
STAGING

DRAWN BY : M. KHIN DATE : 01/2025  
CHECKED BY : M. ACOSTA DATE : 01/2025  
DESIGN ENGINEER OF RECORD: M. ACOSTA DATE : 03/2026

DOCUMENT NOT CONSIDERED  
FINAL UNLESS ALL  
SIGNATURES COMPLETED

REVISIONS						SHEET NO.
NO.	BY:	DATE:	NO.	BY:	DATE:	
1			3			S-8
2			4			TOTAL SHEETS 32